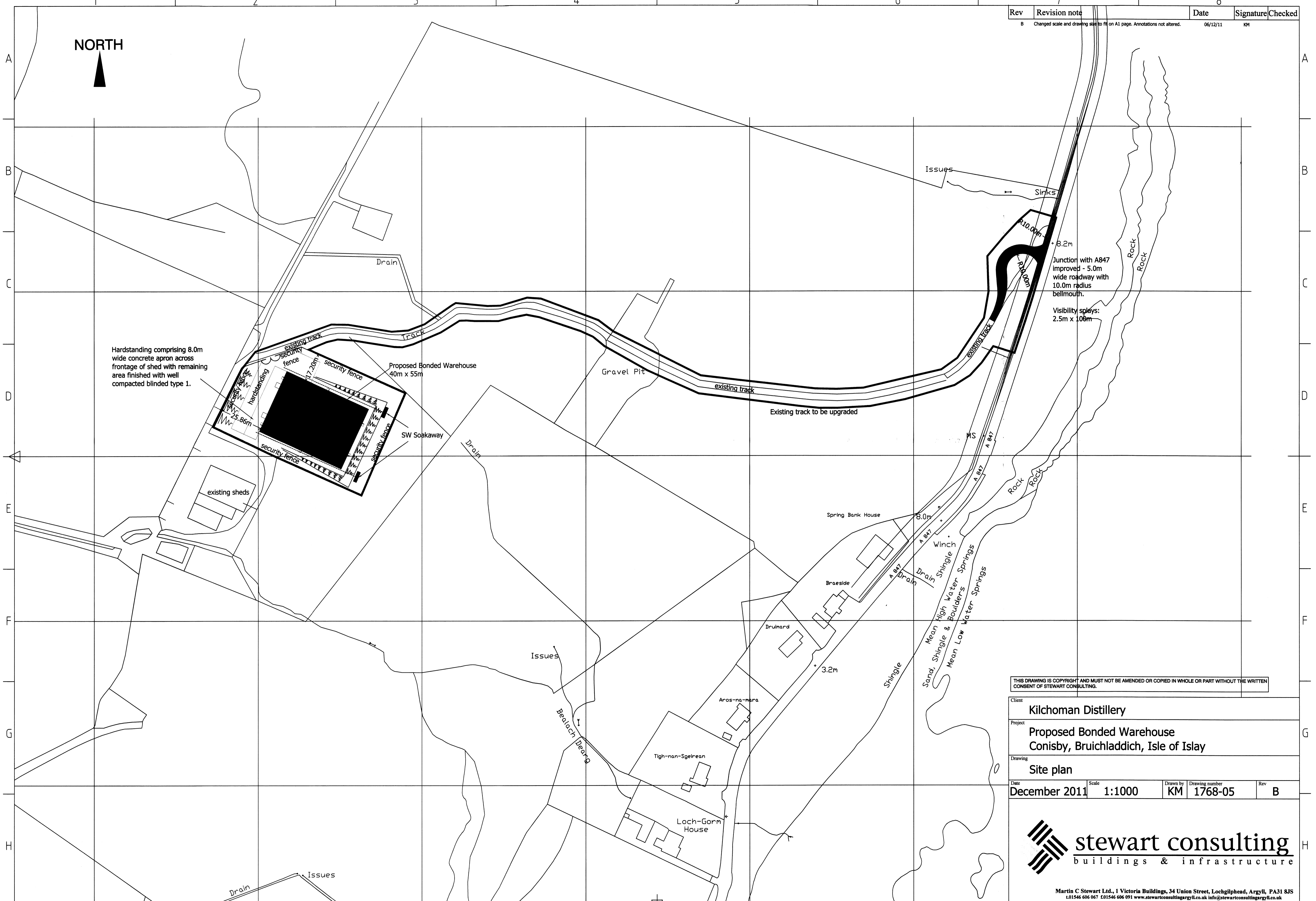
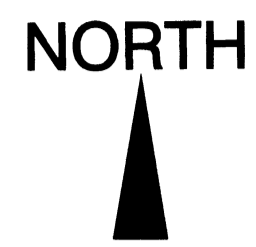


Rev	Revision note	Date	Signature	Checked
B	Changed scale and drawing size to fit on A1 page. Annotations not altered.	06/12/11	KM	



THIS DRAWING IS COPYRIGHT AND MUST NOT BE AMENDED OR COPIED IN WHOLE OR PART WITHOUT THE WRITTEN CONSENT OF STEWART CONSULTING.

Client	Kilchoman Distillery			
Project	Proposed Bonded Warehouse Conisby, Bruichladdich, Isle of Islay			
Drawing	Site plan			
Date	December 2011	Scale	1:1000	Rev
Drawn by	KM	Drawing number	1768-05	B



Martin C Stewart Ltd., 1 Victoria Buildings, 34 Union Street, Lochgilphead, Argyll, PA31 8JS
t.01546 606 067 f.01546 606 091 www.stewartconsultingargyll.co.uk info@stewartconsultingargyll.co.uk